



Sport Tourism Venue Guide

2026

It's all happening here.

The Portland Expo Center (Expo) stands as a versatile event venue, offering over 330,000 square feet of space across multiple meeting rooms and five exhibit halls.

With advanced amenities, including high-capacity electrical systems, full rigging capabilities, ample parking, and access to public transit, Expo accommodates a diverse range of events, from large-scale consumer shows to intimate gatherings. Whether hosting a trade show, sporting event, or corporate meeting, Expo delivers a professional environment tailored to success.



Green Wall Courtyard between Hall D and E

Facility Map	4
Requirements and Services	5
Event Requirements and Staffing	5
Exclusive Services	5
Rental Rates	5
Services Included	5
Ticketed Events	5
Premium Add-ons	5
Exhibit Hall D Overview	6
Exhibit Hall E Overview	8
Court Layouts	10
Basketball	10
Volleyball	11
Court Totals	12
Court Dimensions	13
Basketball	13
Volleyball	14

Facility Map



Event Requirements and Staffing

Expo will provide all event-related staff at the Licensee's expense. All event requirements must be approved by Expo's management at least thirty (30) days prior to the beginning (first day) of the term.

A late fee may be imposed if the Licensee does not submit all event information and requirements to Expo within thirty (30) days of the first move-in day or event day, whichever comes first.

The Licensee shall provide a minimum of \$1 million comprehensive general liability insurance to cover the licensed rental term. Security from our approved provider list is required for the contract term. Levels and locations are determined by Expo management.

Exclusive Services

- Food and beverage
- Electrical
- Ticketing services
- Ticketing and admission staffing

Rental Rates

- Courts, hoops, and nets are included with rental charges.
- Complimentary move-in/move-out time is computed on a one-for-one basis with show days for a maximum of two (2) days, subject to availability. After two (2) days, the rate is one-half the daily rental fee for the exhibit hall per day.

Services Included

- Daily rental charges are based on twelve (12) hours of occupancy. Additional labor hours and utility charges will apply after twelve (12) hours of occupancy.
- Space in the lobby is considered common space and should be used for registration and ingress/egress purposes only. Other uses must be approved by Expo.
- House lighting, ventilation, and heat/air conditioning is provided during event hours. Work lights will be maintained during move-in/move-out hours.
- Event janitorial and trash removal based on square footage and occupancy. Excessive refuse charges may apply.

Ticketed Events

- All ticketed events shall use the Portland Expo Center box office and authorized ticket agents only (TicketsWest).
- All ticketed events are subject to a 6% user fee, plus 3.7% credit card fee for each ticket sold.

Premium Add-ons

- Championship courts
- Bleacher seating

Exhibit Hall D Overview

As Expo's most popular building, Hall D offers 72,000 square feet of unobstructed, column-free space.

Amenities

- East/west airwall divider
- Complete HVAC system (cooling and heating)
- 4 meeting rooms
- 2 restrooms on diagonal
- 6,400 square-foot lobby with box office, ATM, and first aid
- Hall paging capacity

Food and Beverage

- 2 food and beverage locations on diagonal

Lighting

- Programmable LED house lighting

Loading and Access

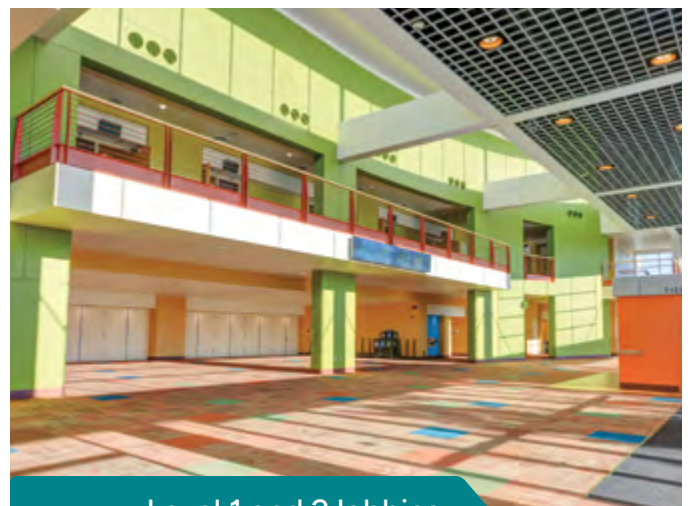
- 2 coil doors for drive-in access measuring 18 by 20 feet
- 3 loading dock bays (one bay includes leveler)
- Covered dock space or storage

Parking

- 2,500 on-site parking spaces

Water Fill and Drain

- 4 water fill and drain locations



Hall D layout options	Courts	Championship courts
Basketball	8	-
Basketball	6	1
Volleyball	10	-
Volleyball	8	1



Basketball championship rendering



Volleyball tournament rendering

Exhibit Hall E Overview

Hall E is Expo's largest building, offering an impressive 108,000 square feet of versatile, open event space.

Amenities

- East/west airwall divider
- Complete HVAC system (cooling and heating)
- 2 meeting rooms
- 2 restrooms on diagonal
- 6,400 square-foot lobby with box office, ATM, and first aid
- Hall paging capacity

Food and Beverage

- 2 food and beverage locations on diagonal

Lighting

- Programmable LED house lighting

Loading and Access

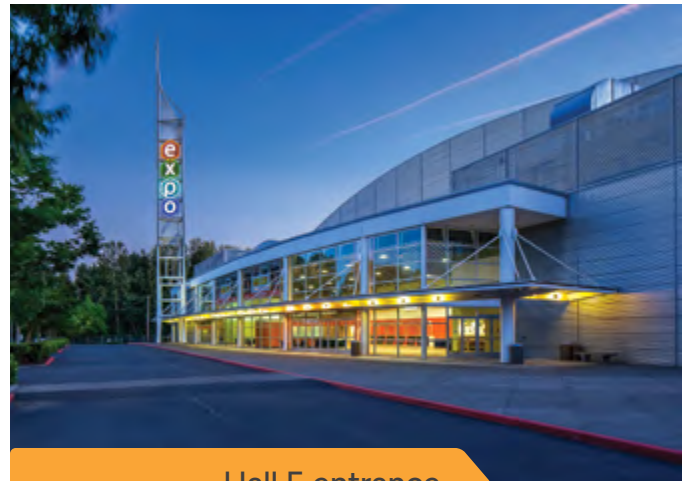
- 3 coil doors for drive-in access measuring 18 by 20 feet
- 3 loading dock bays (one bay includes leveler)
- Covered dock space or storage

Parking

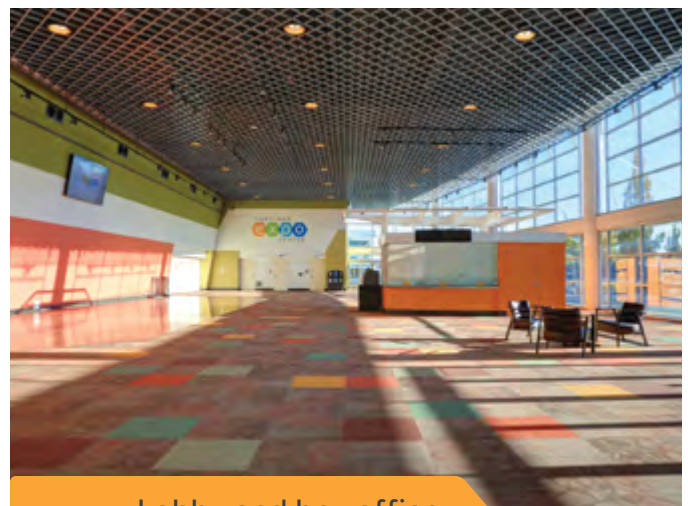
- 2,500 on-site parking spaces

Water Fill and Drain

- 4 water fill and drain locations



Hall E entrance



Lobby and box office



Inside Hall E

Hall E layout options	Courts	Championship courts
Basketball	12	-
Basketball	8	2
Volleyball	18	-
Volleyball	12	2



Basketball championship rendering

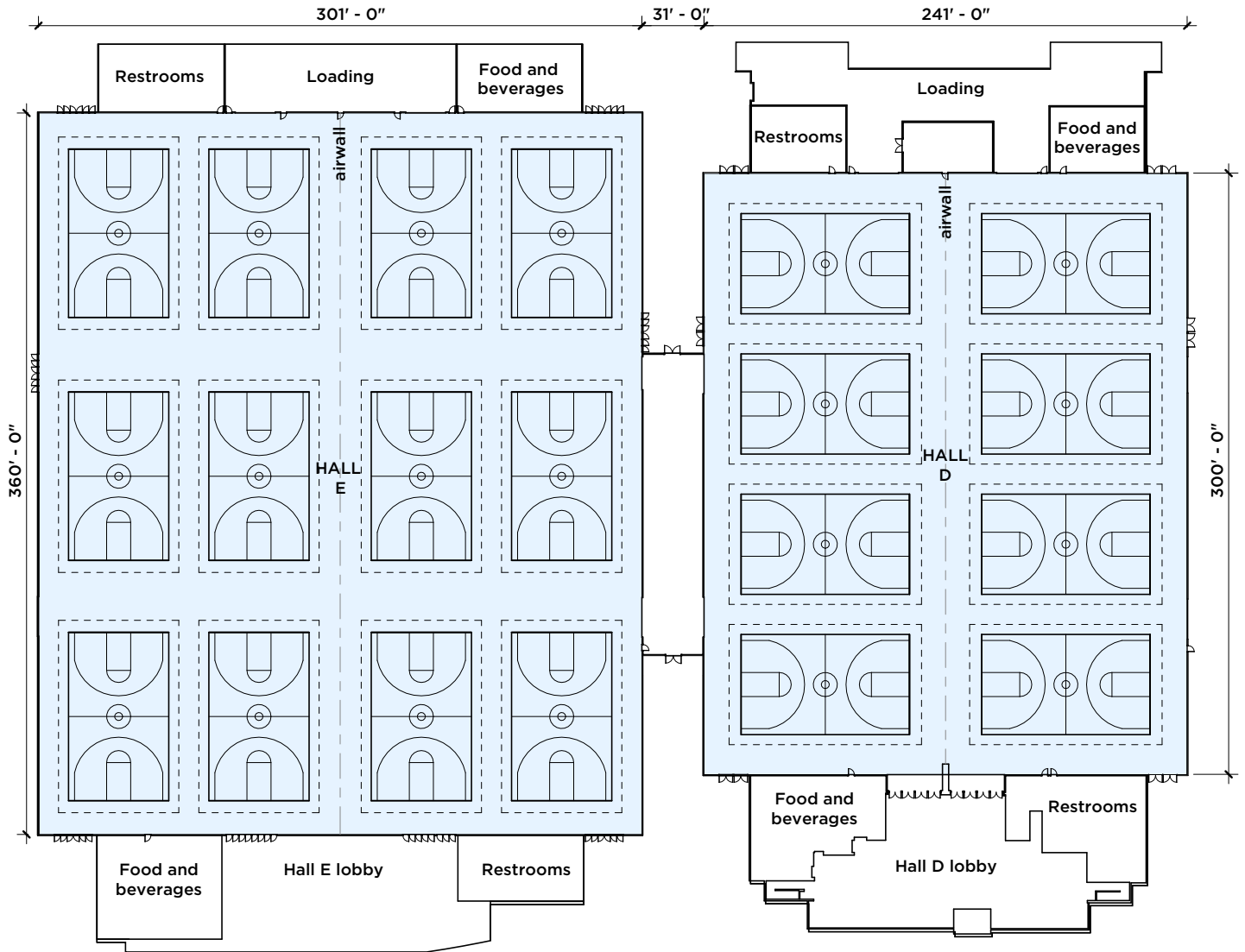


Volleyball championship rendering

Court Layouts

Basketball

20 courts with ceiling mount hoops

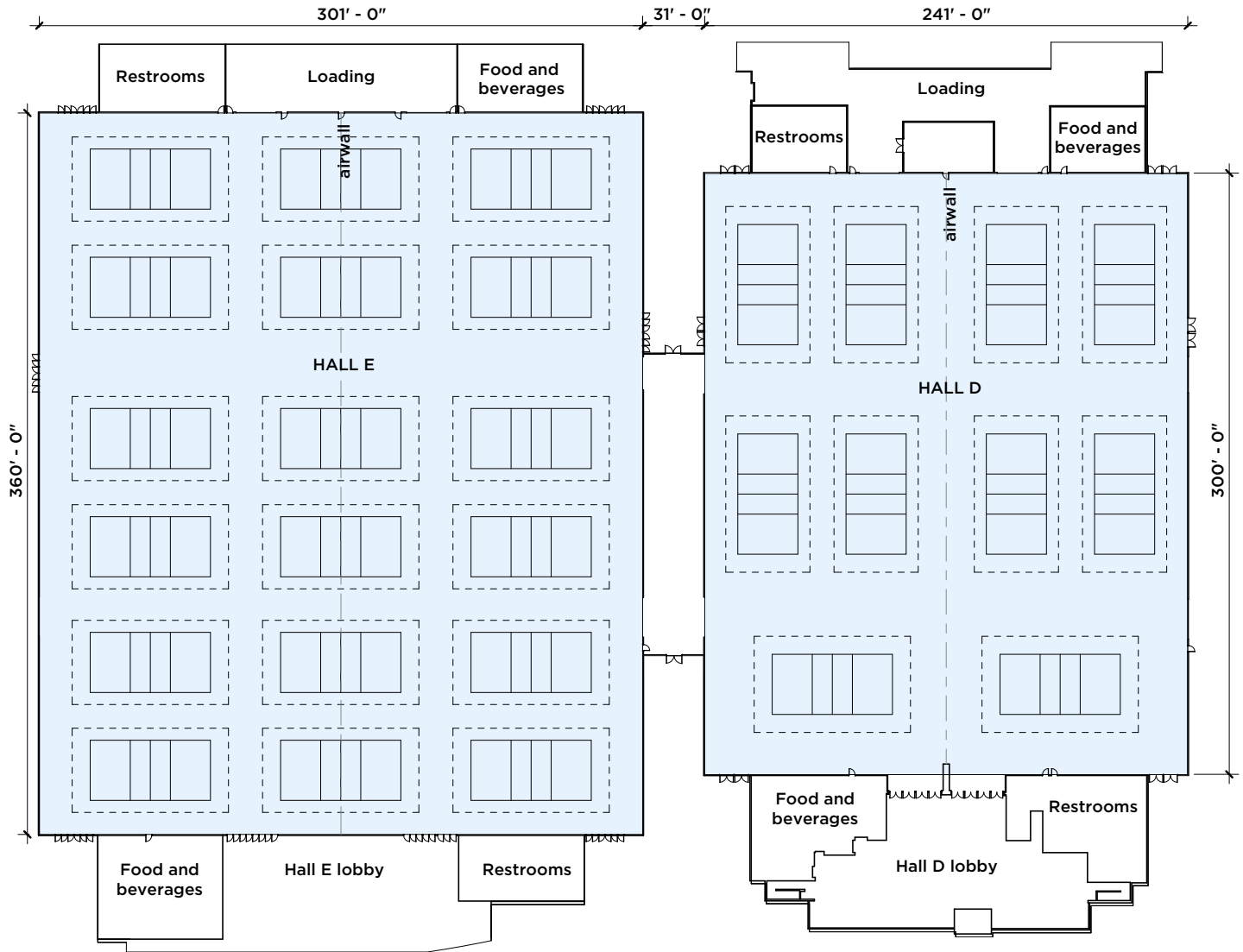


Hall E

Hall D

Volleyball

28 courts and portable nets



Hall E

Hall D

Court Layouts

Hall D and E layout options	Hall D		Hall E		Total
	Courts	Championship	Courts	Championship	
Basketball	8	-	12	-	20
Basketball	6	1	8	2	17
Volleyball	10	-	18	-	28
Volleyball	8	1	12	2	23

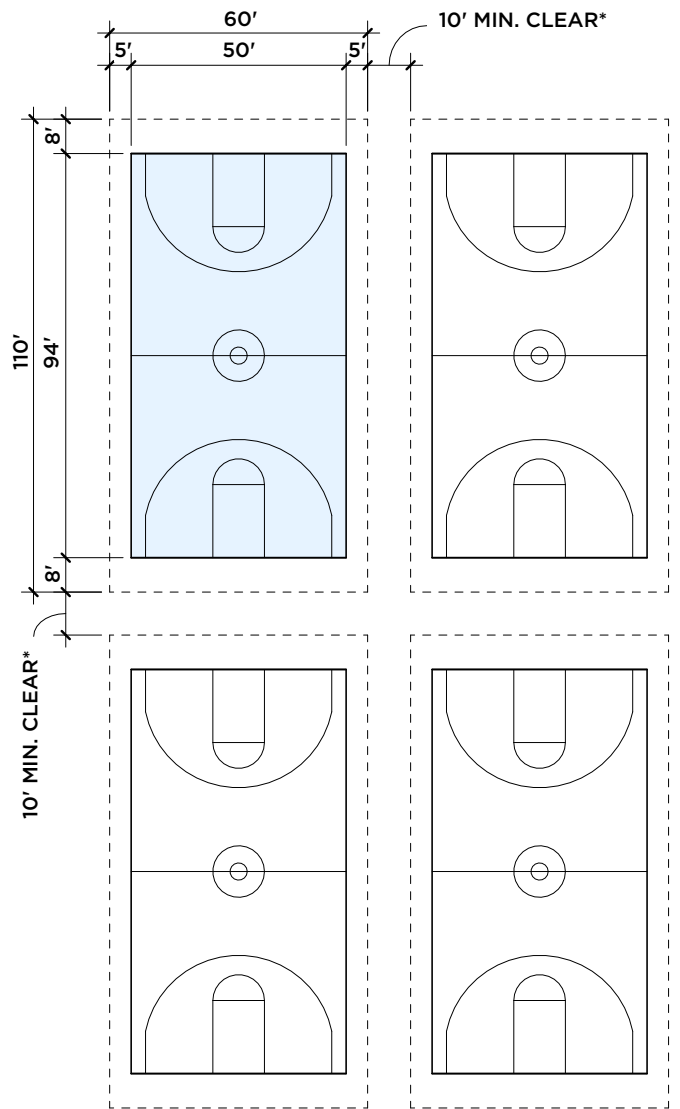
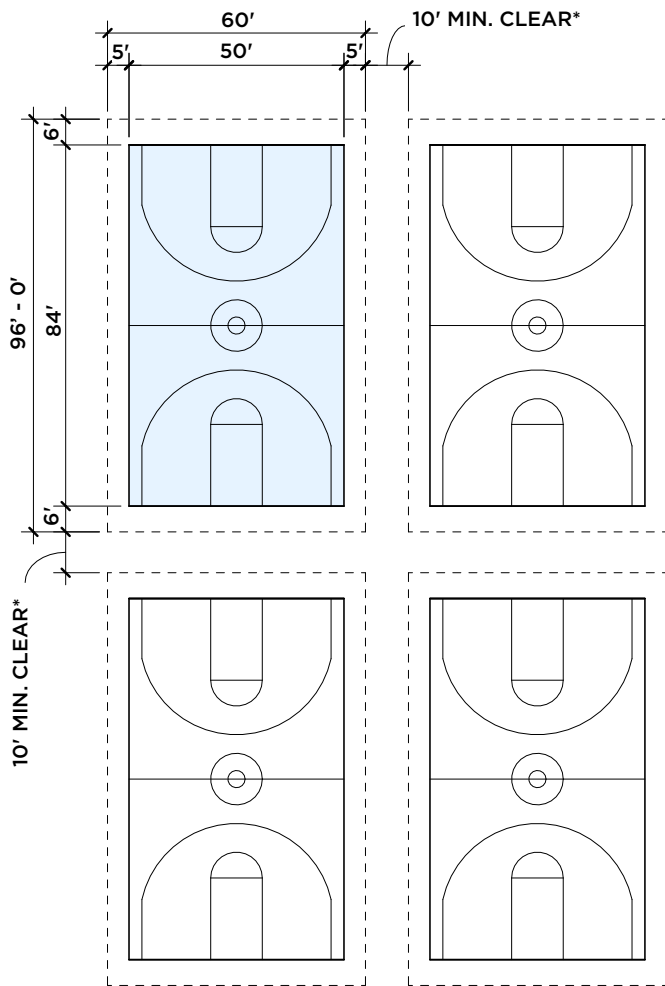
View through the roof rendering



Hall E

Hall D

Basketball

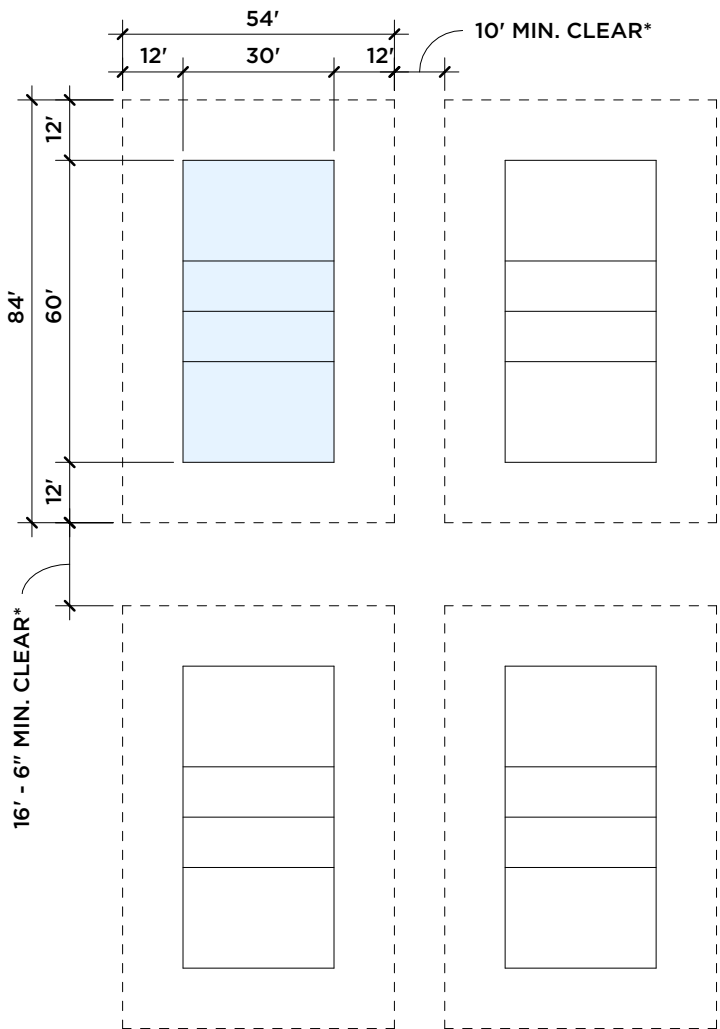
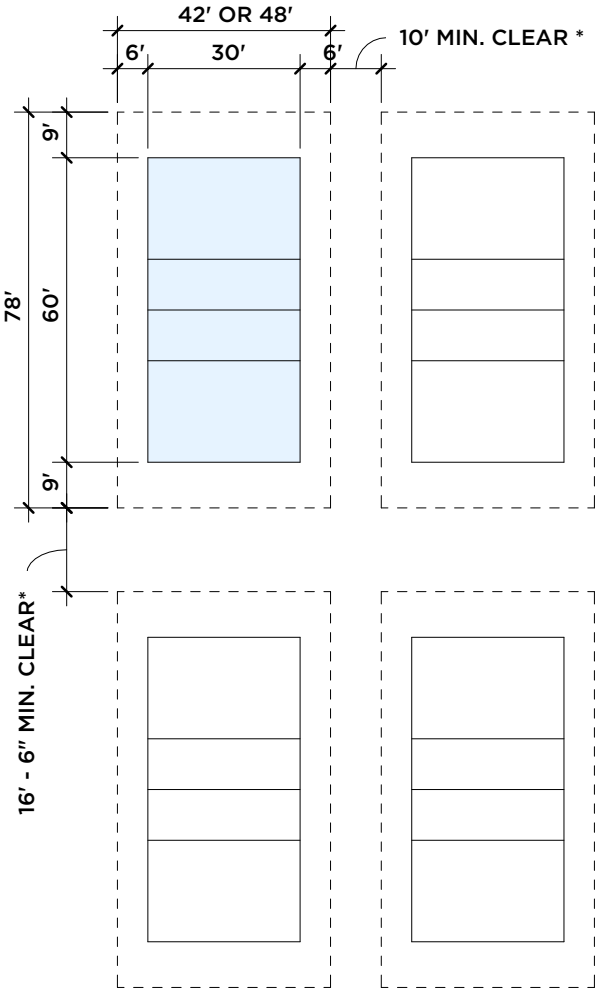


Courts

Championship courts

Court Dimensions

Volleyball



Courts

Championship courts

Contact us to discuss how to make your event
unforgettable at the **Portland Expo Center**.





503-736-5200
info@expocenter.org
expocenter.org